

# REGENT EVO

VERTICAL SEALER CONVEYOR SYSTEM



**CONTINUOUS FEED INLINE ROTARY  
SEALER FOR POLY AND SINGLE  
WEB PLASTIC FILMS**

---

## REGENT EVO CONTINUOUS FEED HEAT SEALER

---

Regent Evo model of rotary heat-sealing machine is designed primarily for the sealing of single web plastic film bags and pouches i.e polyethylene, polypropylene, etc, it can also be used with co-extruded and plastic laminated films. (For other specialist films or pouches that incorporate a clip top, consult Astrapac, to ensure their suitability to pass through the sealing head).

Vertically arranged, Regent is suitable for sealing small to medium pre packs e.g powders and free flowing pack, sizes typically of up to 5Kg.

The sealer incorporates precisely controlled powerful heaters, air cooling and an integral pressure wheel mechanism, to provide a high seal integrity of good visual appearance.

The Regent system is made up of three principal parts. The sealing head, a height adjustable floor stand and a high level belt conveyor. The sealing head features a belt driven infeed to aid presentation of the bag top, ensuring the bag top is presented and remains square as it passes through the sealer.

Controls are kept to a minimum, comprising of power switch, variable speed controller and a precise digital temperature control.

**Note:** The running speed of the system is dependent on the thickness and characteristics of the bag/ film being sealed.

The standard chassis is manufactured in stainless steel, some internals aluminium and engineering plastics.

### NOT SUITABLE FOR HEAVY GAUGE FOILS AND PAPER LAMINATES

---

#### FEATURES

Ability to seal through single web film gussets.  
Electronic variable speed.  
Accurate temperature control.  
Simple in operation

---

#### OPERATION

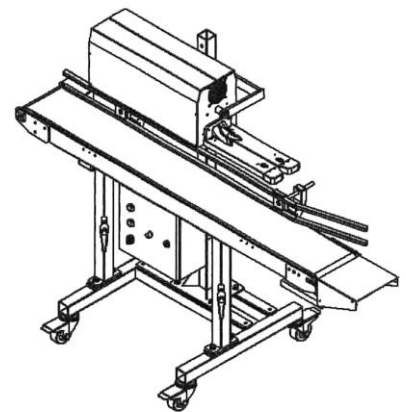
Regent uses the principle of Teflon bands to both transport and transfer heat into to the bag top, as it passes through an arrangement of heater blocks and pressure wheels to affect a seal.

---

#### TECHNICAL SPECIFICATION SEALING HEAD

---

Seal Width	8mm
Seal Form	Flat
Maximum Throat Depth of the Sealer (to allow the bag tops to pass through)	70mm
Minimum Height Distance Required Inside the Sealer to Produce a Seal	40mm
Infeed Length	340mm
Variable Speed Range	3 – 12 Metres
Temperature Range	Maximum 250°C
Cooling	Air Fan
Power Consumption	500 Watts
Power Supply	230 Volts
Direction Of Feed	Right to Left (Standard)
Finish	Stainless Steel Bodywork



---

## HEIGHT ADJUSTABLE FLOOR STAND

---

Provided to support the sealing head and set the relevant seal height of the pack in relation to the belt conveyor. Using a telescopic tube principle, the sealing head can be raised and lowered to suit. This is manually adjusted, aided by an internal gas strut. The floor stand has a sturdy base which is mounted on braked wheels for manoeuvrability. Constructed in stainless steel



---

## BELT CONVEYORS

---

Astrapac provide a standard high-level belt conveyor which is suitable for most applications. Integrally arranged (allows the sealing head, floor stand & conveyor to be fixed together as a one-piece unit), the system is able carry 4 x 5Kg packs at any one time.

Different sized or existing conveyors can be used, subject to them being compactable with the Regent sealing head.

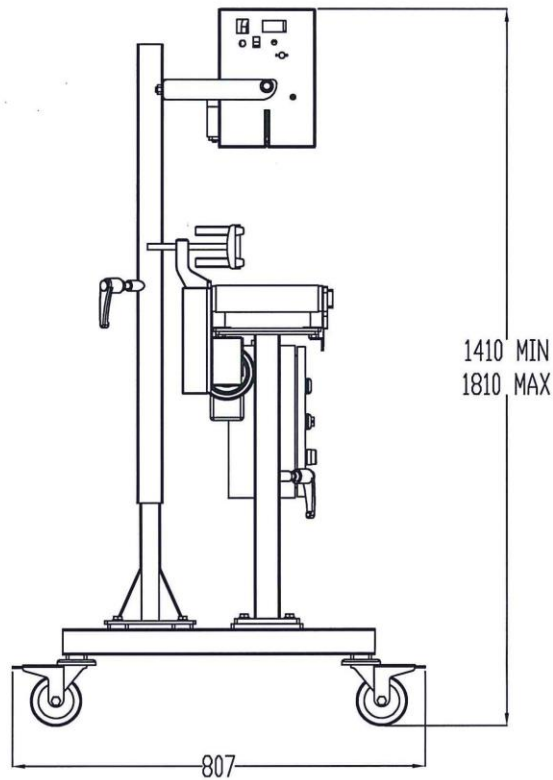
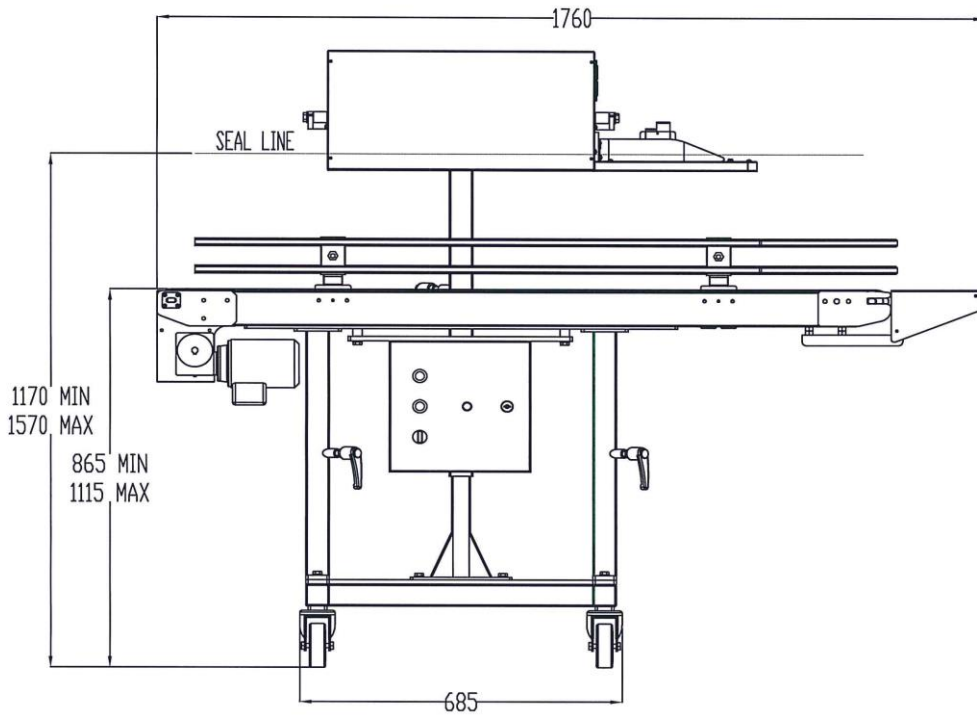
The conveyor offered incorporates a number of features including, IP54 ingress rating, an initial preparation plate ahead to the transport belt, (provided for readying a pack prior to presentation). A fully adjustable rear mounted pack guide, (ensures pouches run along the centre line of the system). It has its own independent height adjustment, allowing the belt height to be matched to other existing inline equipment or set to a comfortable working height for an operative.



The conveyor channel itself, has a travel facility in its design, this allows some forwards or backwards movement to offset the sealing head from centre, should the application dictate, (e.g. necessary to overhang a carousel, pass through a partition, wall etc). The conveyor is variable speed and is fitted with a food grade transport belt. A tracking system eliminates belt wandering. Manufactured in stainless steel.

Speed	Variable (to match head)	
Standard Belt Sizes	154cm Long	21cms Wide
Working Height from Floor	865-1115mm	
Belt Spec	F.D.A. Approved Polyurethane	
Max Capacity	25Kg	
Infeed prep plate length	340mm	
Power Supply	230 Volts	
Direction of Feed	Right to Left (Standard)	
Finish	Stainless Steel	

**REGENT EVO DIMENSIONS OF STAND ALONE SEALING SYSTEM**



ASTRAPAC (MIDLANDS) LTD.  
MOUNT ROAD, BURNTWOOD,  
STAFFORDSHIRE, UK WS7 0AJ,  
TELEPHONE: (01543) 677262  
Website: [www.astrapac.co.uk](http://www.astrapac.co.uk), Email: [sales@astrapac.co.uk](mailto:sales@astrapac.co.uk)

